

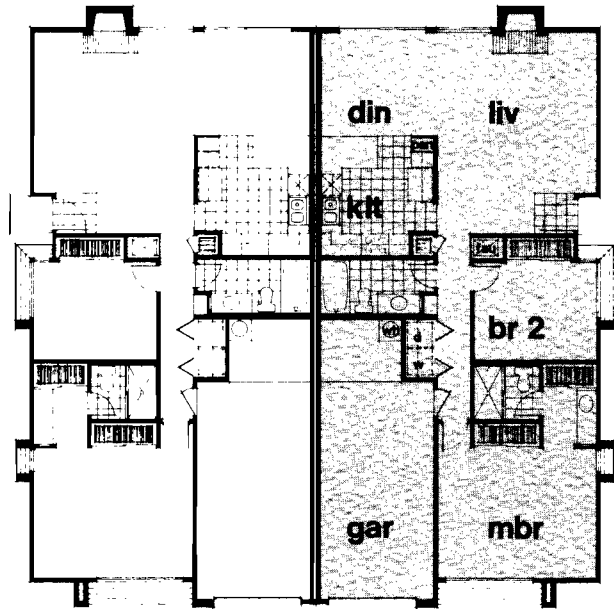
Bay Ridge

At Pacific Scene we have made a commitment to build quality homes in excellent neighborhoods. Homes that a growing family can afford.

In this time of high land and labor costs, the Duplex Garden Home has helped us keep this commitment by using land and building materials more efficiently.

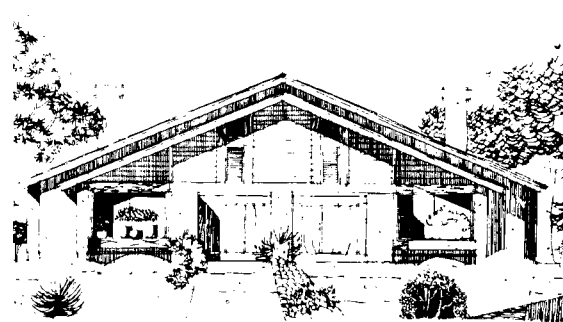
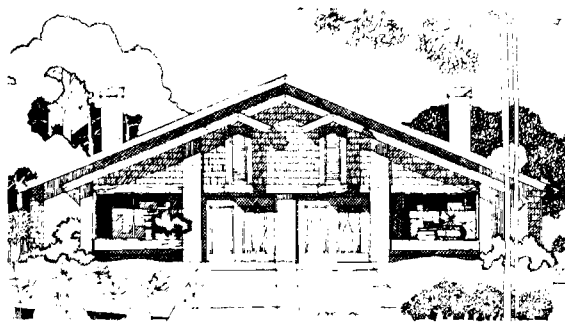
At Bay Ridge you can see the results of our efforts. Here are affordable homes that are spacious, beautiful, and built to the highest standards. And here you'll find another advantage. A close-in location that will save you time and energy—at a time when we're experiencing shortages of both.

Pacific Scene, Inc.



The Sandpiper

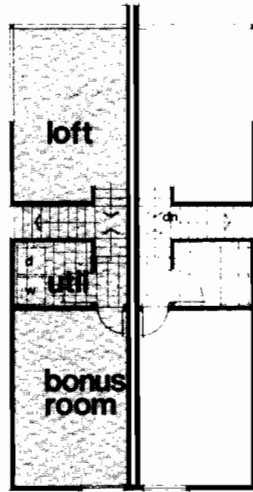
PLAN 1



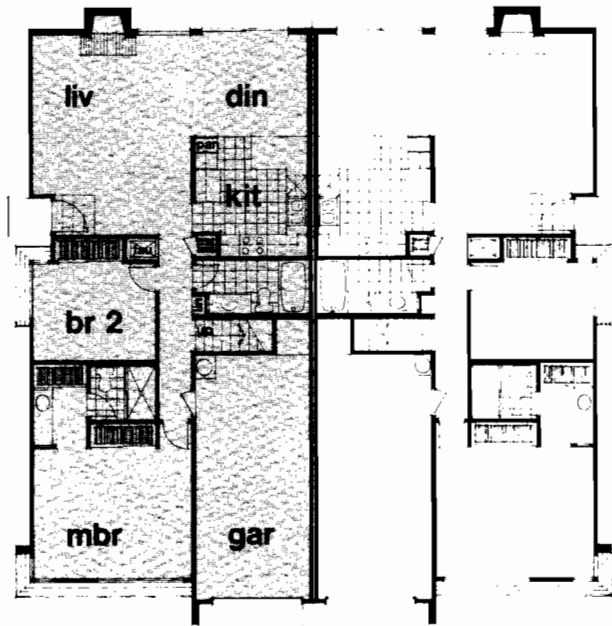
A

(landscaping shown is for illustration purpose only)

B



second floor



first floor

The Cabrillo

PLAN 1LR

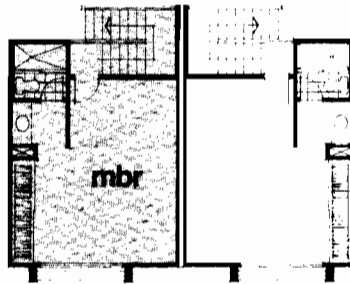


A

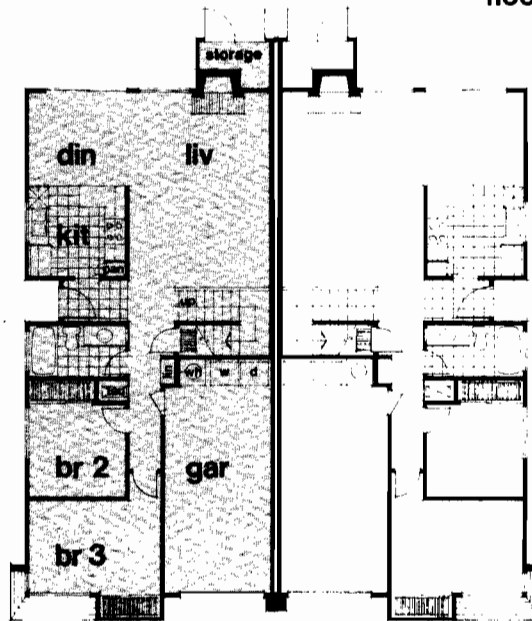


B

(landscaping shown is for illustration purpose only)



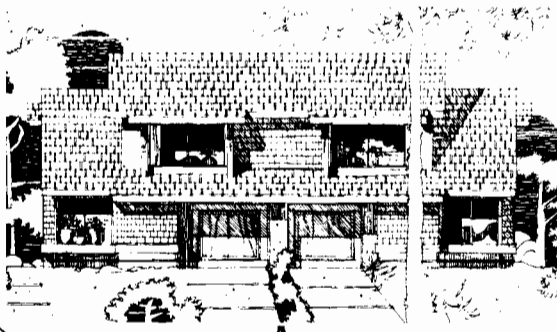
second floor



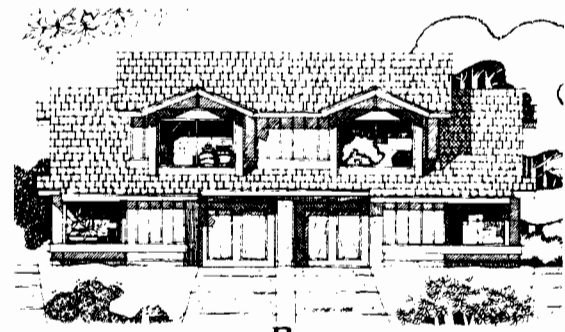
first floor

The Coronado

PLAN 2R

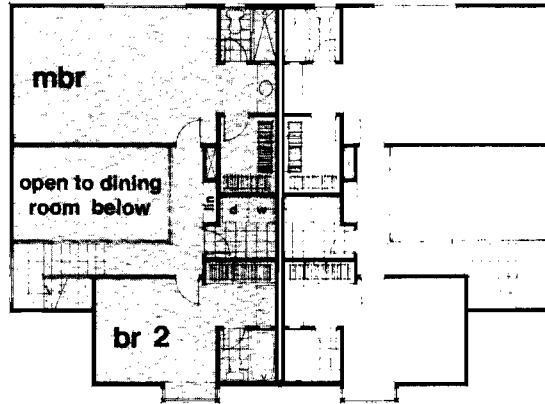


A

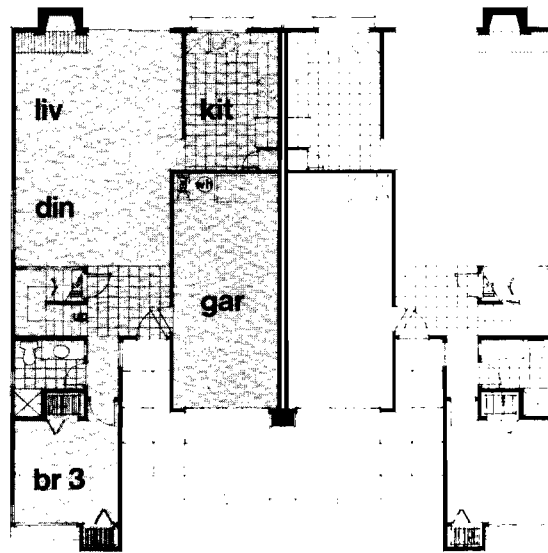


B

(landscaping shown is for illustration purpose only)



second floor



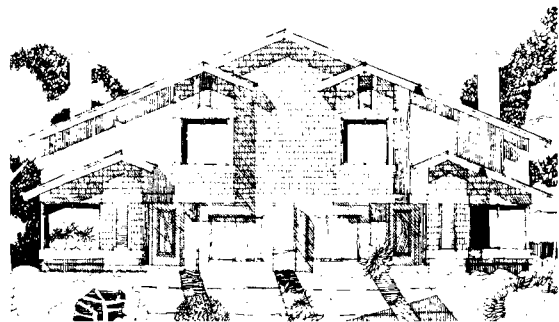
first floor

The Ballast Point

PLAN 3R

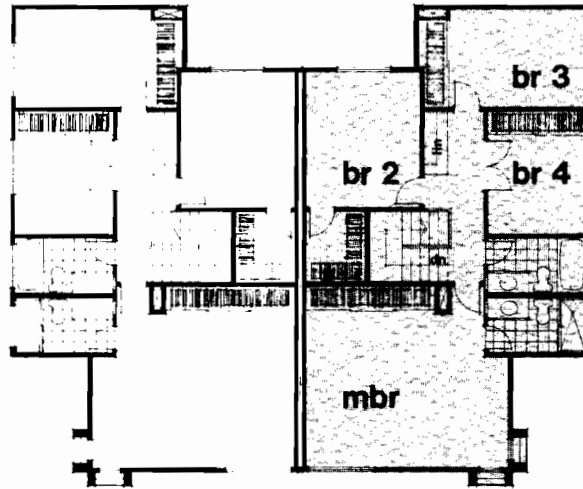


A

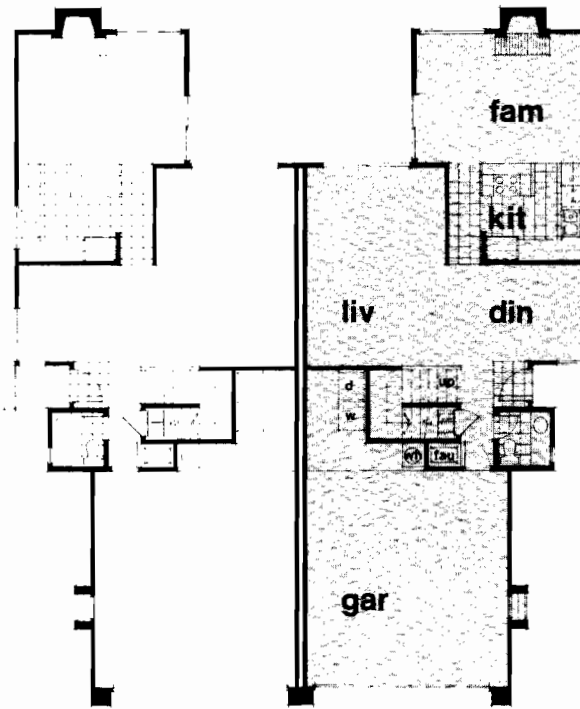


B

(landscaping shown is for illustration purposes only)



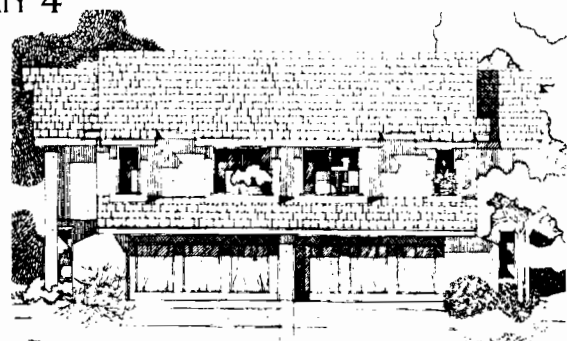
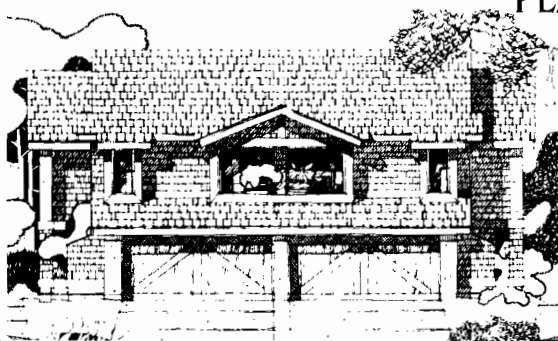
second floor



first floor

The Star of India

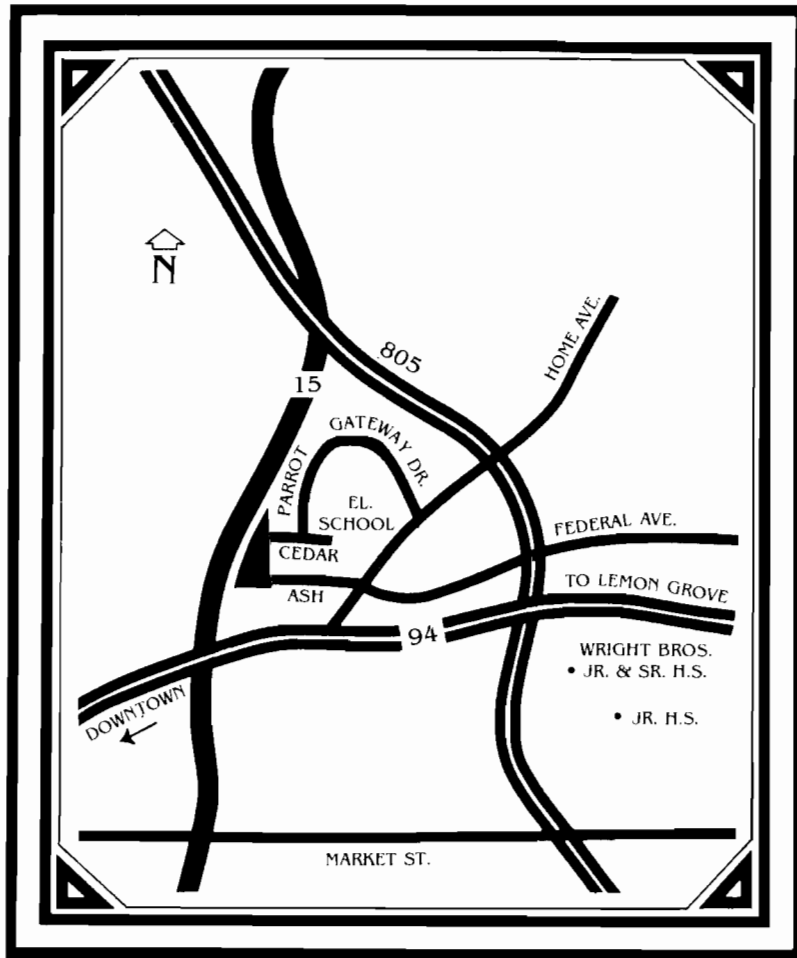
PLAN 4



A

(landscaping shown is for illustration purposes only)

B



Bay Ridge

1464 Bridgeview Drive, San Diego, CA 92105,
263-6686



Another development by Pacific Scene, Inc.

Pacific Scene, Inc., reserves the right to change plans, materials, products, specifications and prices without notice.

